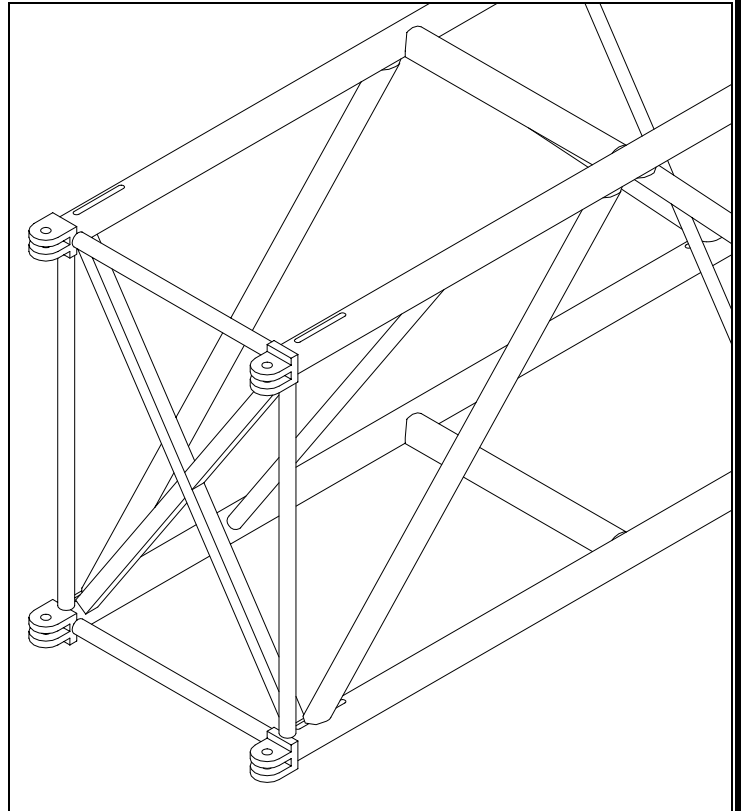


SUPERTRUSS

20.5 x 30

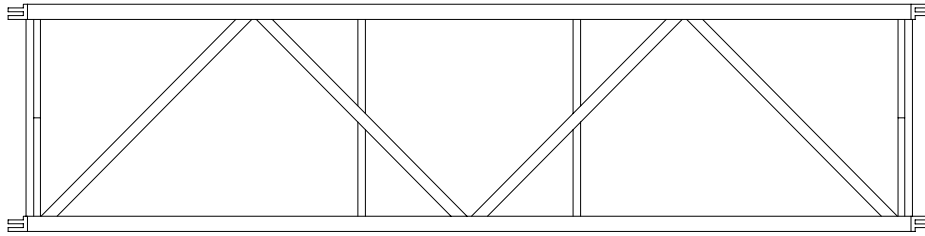
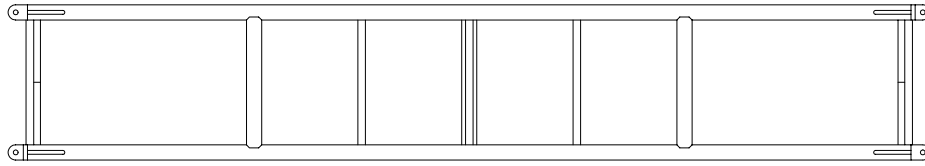
A revolutionary truss designed to offer all the advantages of the Thomas Supertruss design in a 20.5" x 30" layout. This truss is designed for the very long spans and heavy loading requirements asked of the entertainment industry. The maximum allowable span is 100 feet between supports. At that span, the truss will support over 1000 lbs. uniformly distributed load. This truss is made using 6061T6 or 6082T6 alloy 2" x 0.1875" wall tube for the main chords and 1.5" x 0.125" wall tube for the diagonals. The 20.5" x 30" Super-truss provides a substantial increase in load bearing capacity over GP Heavy Duty truss.

PRODUCT CODE	DESCRIPTION	WT lbs
B2960	12' Section	97
B2961	10' Section	86
B2962	8' Section	72
B2963	6' Section	57
B2964	5' Section	52
B2965	4' Section	49
B2966	2' 6" Section	44
B2900A	60 Degree corner gate	37
B2901	90 Degree corner gate	15.5
B2902	120 Degree corner gate	14.25
B1903	135 Degree corner gate	13.25
B2394	3 Way gate	13.25
B2905	3 Way gate with lifting point	23
B1308	Square support plate	11
B1309A	12" Tower Sleeve Plate	19.75
B1309B	15" Tower Sleeve Plate	18.75
B2911	20.5 x 30 super-truss to HD adapter gate	15.5

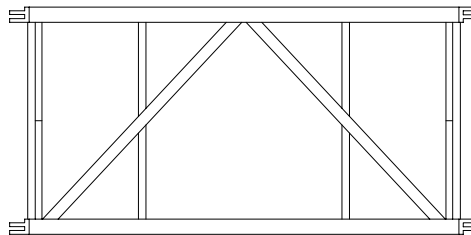
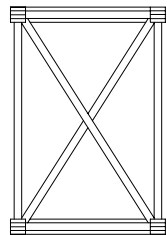
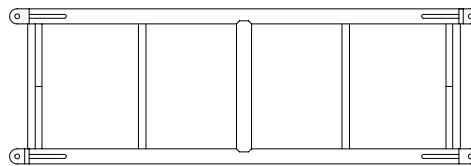


Allowable Load Data	Maximum Allowable Uniform Loads		Maximum Allowable Center Point Loads	
	Span feet (meters)	Loads pounds (kgs)	Maximum deflection inches (mm)	Loads pounds (kgs)
10 (3.048)	11704 (5309)*	0.276 (7)	10158 (4608)*	0.394 (10)
20 (6.096)	11704 (5309)*	0.276 (7)	10158 (4608)*	0.394 (10)
30 (9.144)	11618 (5270)*	0.945 (24)	6728 (3052)	0.945 (24)
40 (12.192)	9180 (4164)	1.18 (46)	4590 (2082)	1.18 (46)
50 (15.24)	5472 (2482)	2.20 (56)	2736 (1241)	2.20 (56)
60 (18.288)	4122 (1870)	3.03 (77)	2061 (935)	3.03 (77)
70 (21.336)	3177 (1441)	3.90 (99)	1589 (721)	3.90 (99)
80 (24.384)	2460 (1116)	4.88 (124)	1230 (558)	4.88 (124)
90 (27.432)	1900 (862)	5.94 (151)	950 (431)	5.94 (151)
100 (30.48)	1437 (652)	7.087 (180)	718 (326)	7.087 (180)

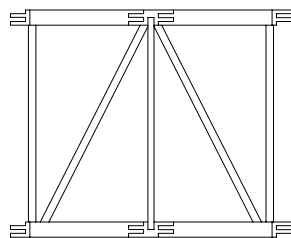
LOADING FIGURES show maximum loads between supports in addition to self weight of truss. Information extracted from structural report by The Broadhurst Partnership. * Denotes load limited to suit maximum shear capacity. All loads include a 20% overload factor for dynamic effects.



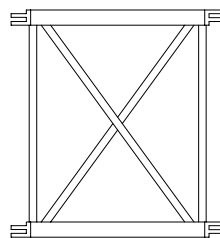
10 ft section



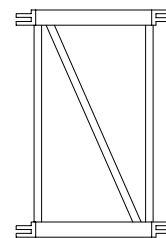
5 ft section



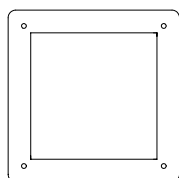
60 Degree Gate



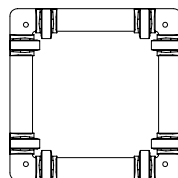
90 Degree Gate



3 Way Gate



Square Support Plate



Tower Sleeve Plate

